
Panorama ESG

novo mundo novos desafios

AN
Adeildo Nascimento

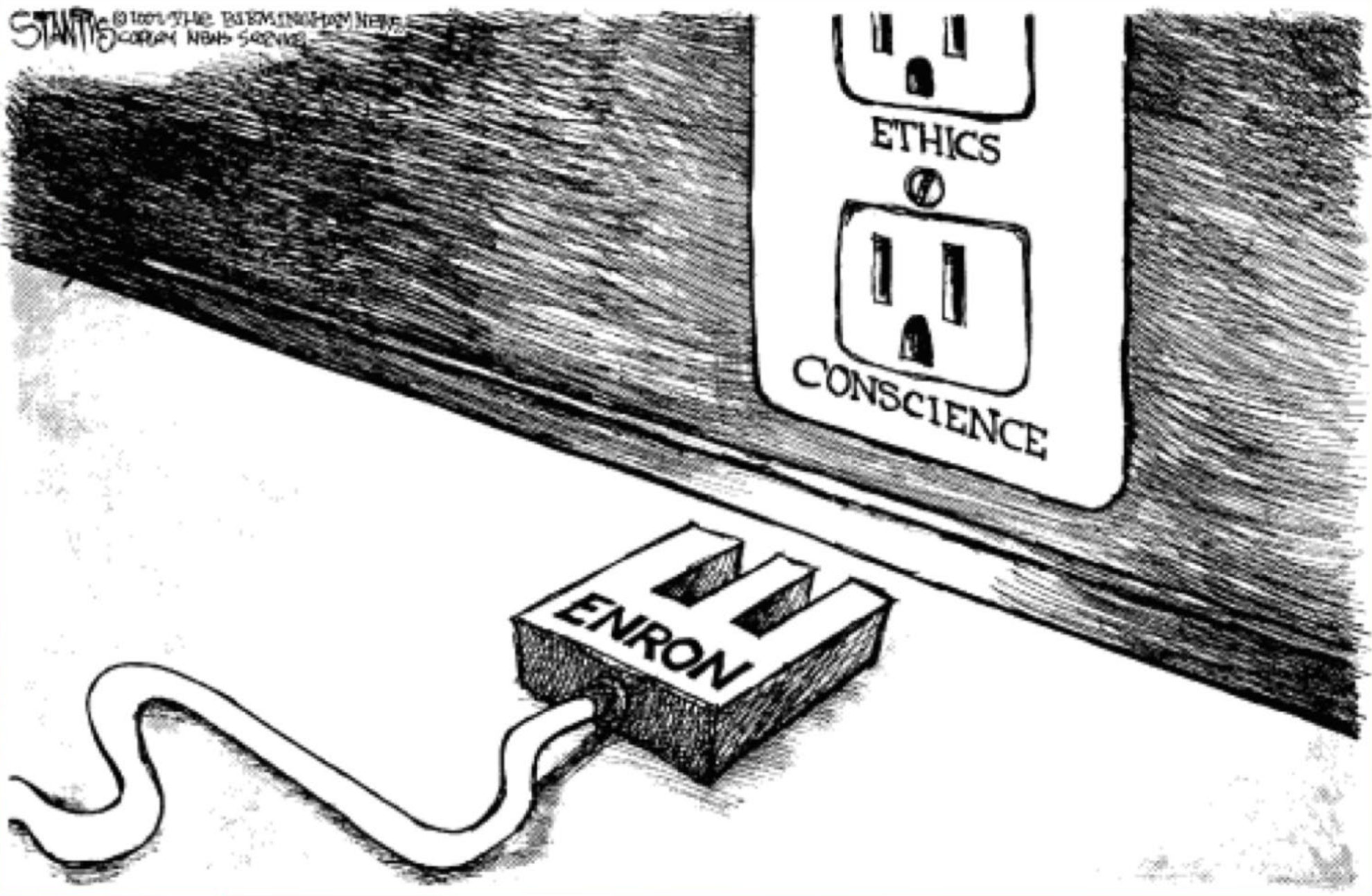
www.adeildo.com

O desafio de entender e governar o século XXI com a cabeça do século XX e as instituições do século XIX

Klaus Schwab



STAFF © 2001 THE BIRMINGHAM NEWS
CORPUS NEWS SERVICE





REPAIRING THE FORD PINTO

COSTS

$\$11 \text{ per part}$
 $\times 12.5 \text{ million cars}$

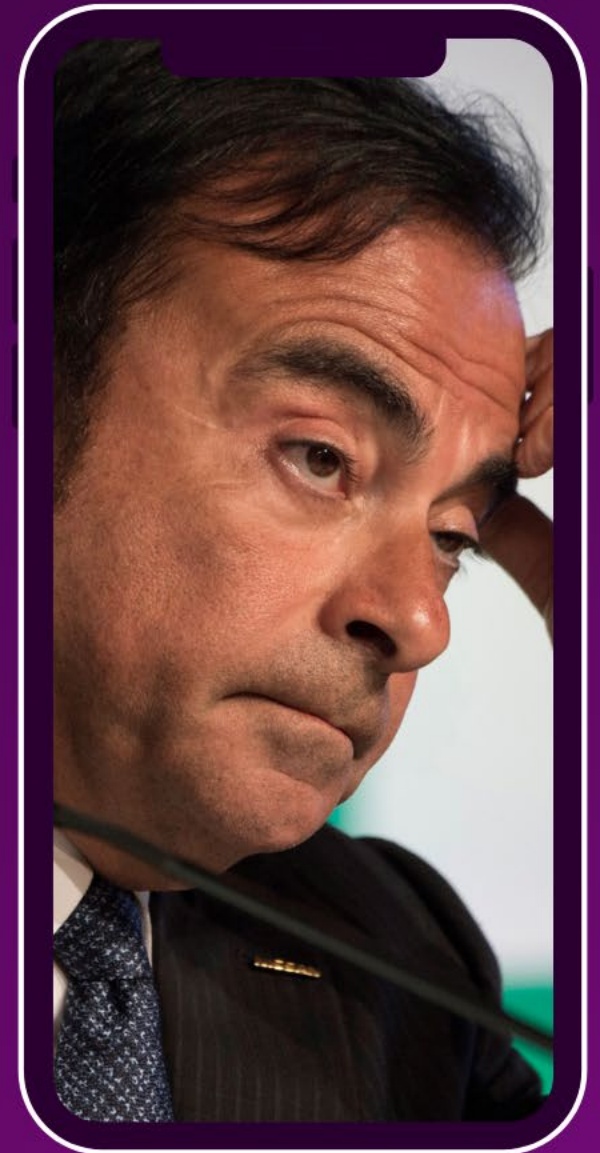
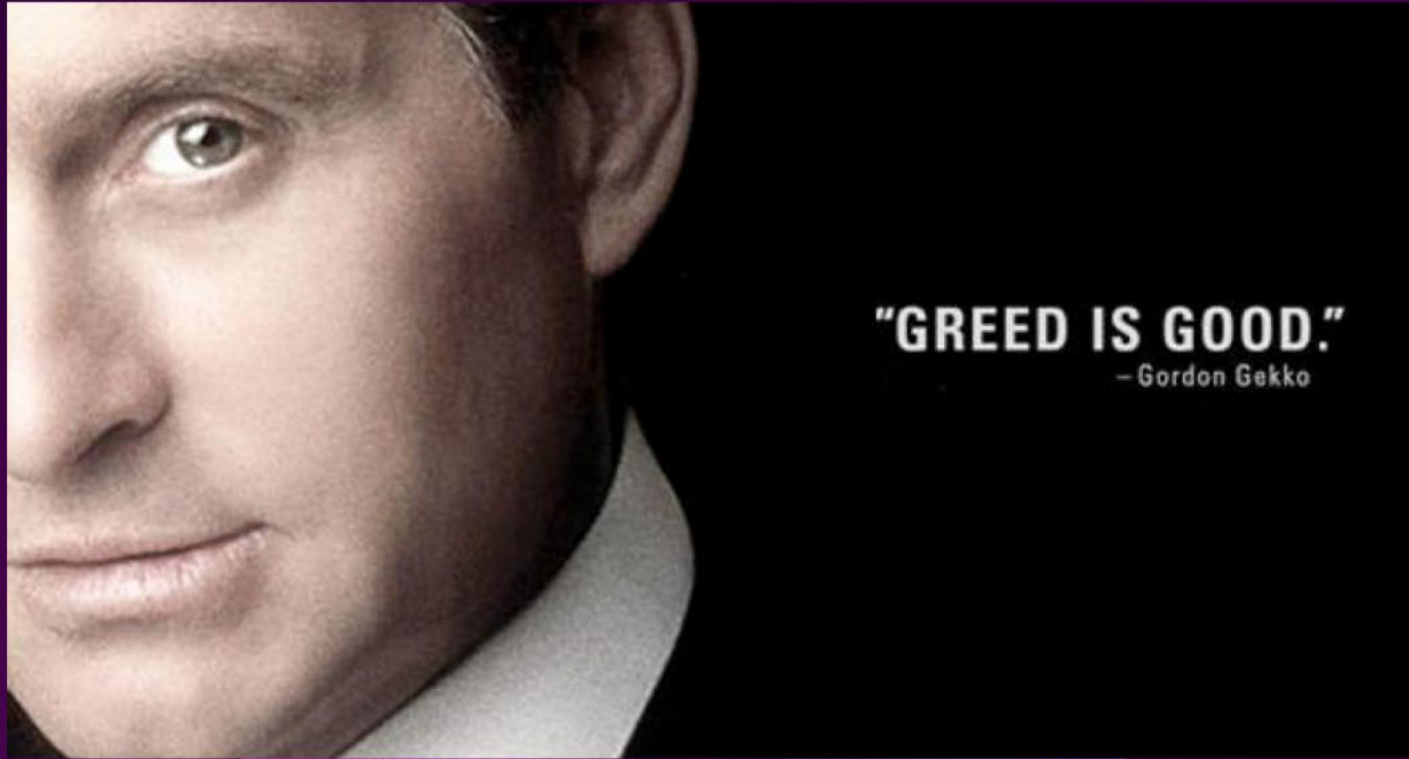
$= \$137 \text{ million}$
(to improve safety)

BENEFITS

$180 \text{ deaths} \times \$200,000$
 $+ 180 \text{ injuries} \times \$67,000$
 $+ 2000 \text{ vehicles} \times \700

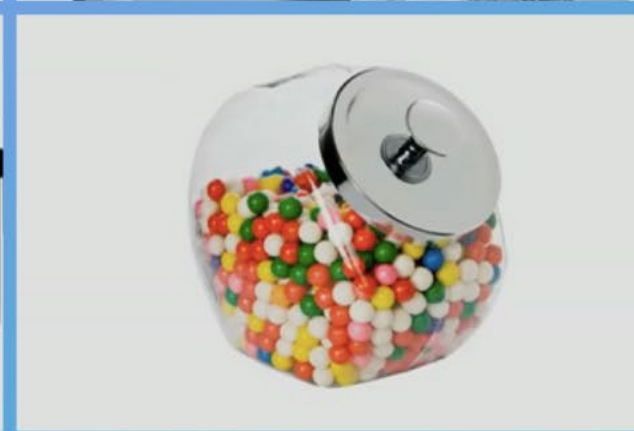
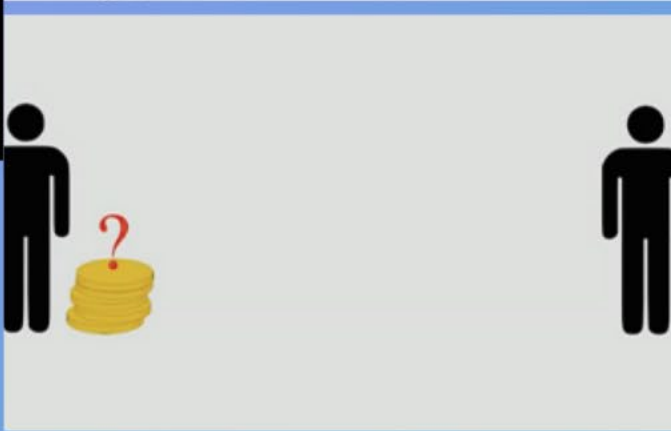
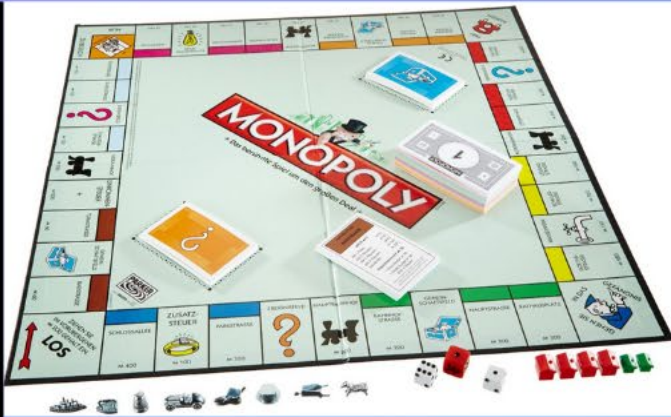
$= \$49.5 \text{ million}$





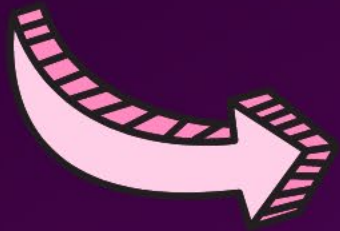


Plutonomy



DINÂMICAS GOVERNANTES









Obrigado



www.adeildo.com



adeildo@adeildo.com



Adeildo Nascimento



[@adeildo.nascimento](https://www.instagram.com/adeildo.nascimento)



[AdeildoPalestrante](https://www.facebook.com/AdeildoPalestrante)



[41 98802-8819](https://wa.me/41988028819)